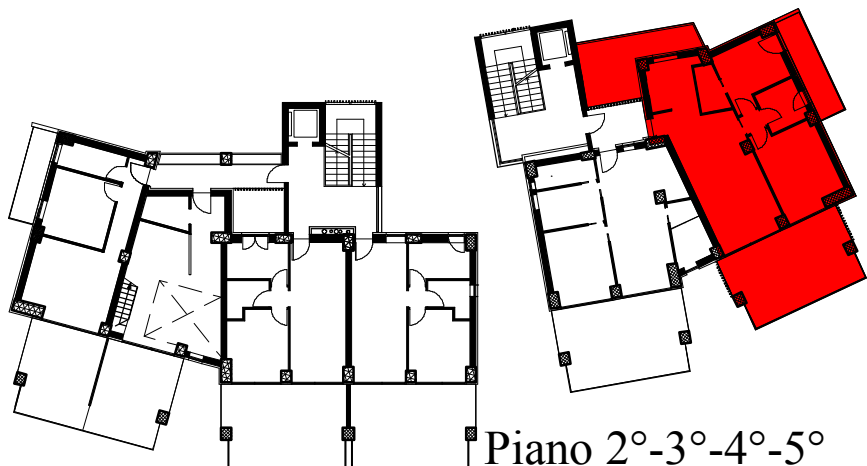
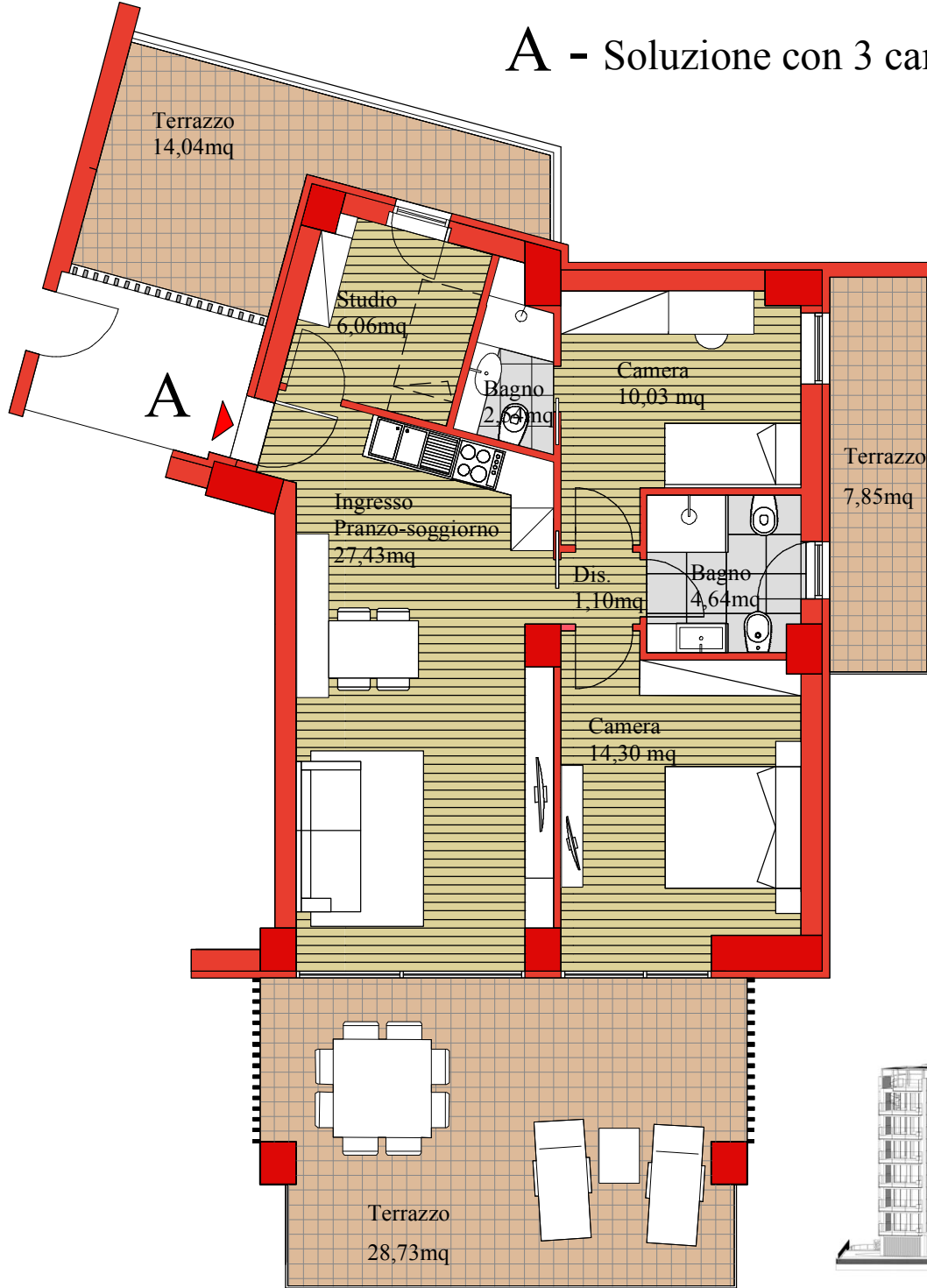


Tipologia:
APPARTAMENTO "A"
 Piano 2-3-4-5 _ corpo 2
 Ipotesi di arredo

SUPERFICI:
 Mq lordi = 80,45
 Mq Terrazzi = 50,62

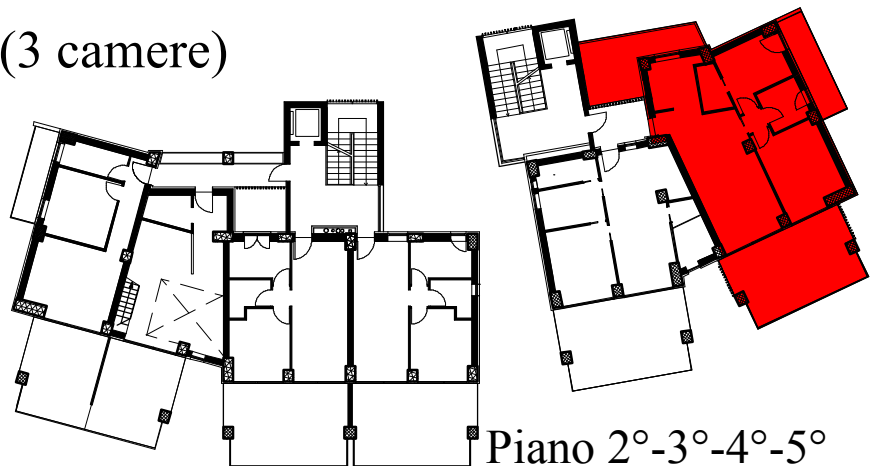


A - Soluzione con 3 camere



Tipologia:
APPARTAMENTO "A"(3 camere)
Piano 2-3-4-5 _ corpo 2
Ipotesi di arredo

SUPERFICI:
Mq lordi = 80,45
Mq Terrazzi = 50,62



Piano 2°-3°-4°-5°